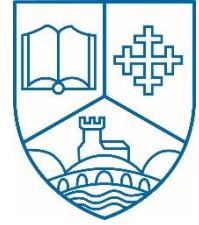


Bidford on Avon

Church of England Primary School



NEWSLETTER 13 – 8th December 2023

Diary Dates –

- **Saturday & Sunday 9th & 10th December** 12pm-6pm – pupils across the school have been working hard to create beautiful Christmas tree decorations for our school entry to the village Christmas tree festival. Please come along to St Laurence Church to see and support our tree.
- **Monday 11th December** - Children in Reception and Year 6 will take part in the National Child Measurement Programme on -please note this is different to the date on last week's newsletter.
- **Wednesday & Thursday 13th & 14th December** at 2:15pm - Our Year 1 and 2 pupils will be performing their Nativity show. A ticket for each performance has been given to each child.
- **Friday 15th December** Our last celebration collective worship
- **Friday 22nd December** NO Celebration Collective Worship.
- **Tuesday 19th December** at 9.45am Reception children will sing Christmas Songs to parents on– 2 seats are allocated per Reception child.
- **Tuesday 19th December** - KS1 (Year 1 & Year 2) & **Wednesday 20th December** – KS2 (Year 3-Year 6) Carol Service 2.30pm in school, parents welcome, collect your free tickets from the office.
- **Wednesday 20th December** – Christmas jumper day and Christmas lunch.

Mrs Horsburgh's Class - Please send your child into school in their school uniform, not forest school clothes on Wednesday 13th December.

Mrs Jones/Mrs Flavell's Class - Please send your child into school in their school uniform, not PE kit on Wednesday 13th December.

KS1 – Year 1 and Year 2 children have written instructions on how to make a posh hot chocolate, with marshmallows and cream. They then followed their own methods to make the drink and enjoyed drinking it while listening to the book of the week, The Polar Express.

LKS2 – In DT Year 3 & Year 4 have been looking at the mechanics of a pop up card and make been making prototypes of their own.

KS2 - Year 5 and Year 6 have invited Reception children to come and play the games they made as part of their Quizzing unit in computing. They are hoping for good feedback.

Miss Waters Class - have started their photo montage work for the digital art unit. Children looked at the artist's work of Hannah Hoch and other surrealist work, they then used magazine pictures to create their own photo montage using collage.

School Uniform - Children should wear only stud earrings, we have noticed a few hooped earrings which are not safe for school. Children should only wear trainers on PE days, school shoes should be worn on all other days.

Christmas Jumpers – Pupils are invited to wear Christmas Jumpers on Wednesday 20th December instead of their school jumper. All other uniform should be worn.

Book of the Week – KS1 have been reading “The Polar Express”. Late on Christmas Eve, after the town has gone to sleep, a boy boards a mysterious train that waits for him: the Polar Express bound for the North Pole. When he arrives there, Santa offers him any gift he desires. The boy modestly asks for one bell from the reindeer's harness. It turns out to be a very special gift, for only believers in Santa can hear it ring.

Mr A Simms

Christmas services at
St Laurence Bidford on Avon

Sunday 17th December

10 a.m.

Carol Service

Christmas Eve (Sunday 24th)

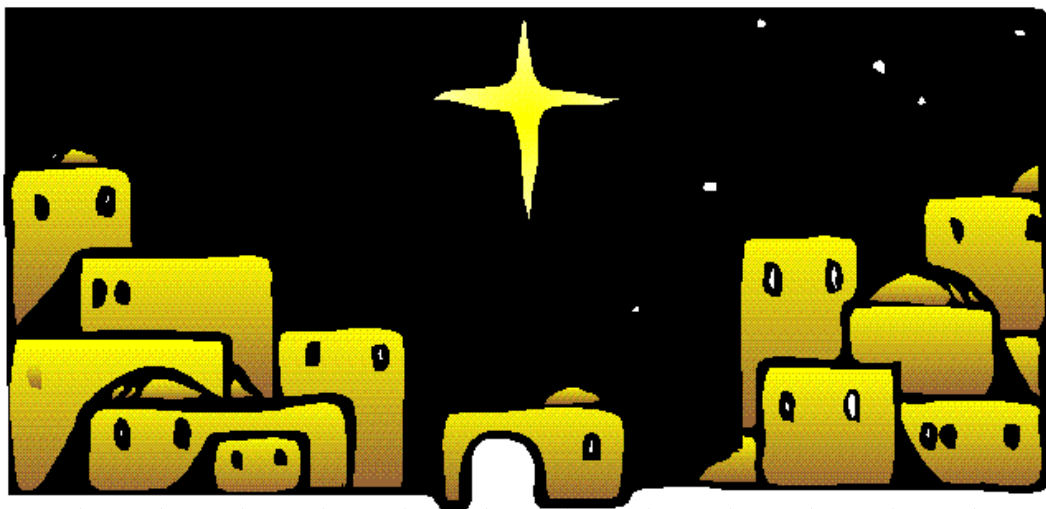
4 p.m.

Crib Service

Christmas Day

10 a.m.

Family Communion





Christmas Raffle

We are now getting close to the big prize draw
for the BSA Christmas 2023 Raffle!

1st Prize - £100 CASH

Plus lots of other fantastic prizes including vouchers from our lovely local businesses:

The Bridge Restaurant
Osco's Café
Laura Hands Hair
SKIN by Ellen
Broom Tavern
Hillers Farm Shop

Tilly Rose Beauty Boutique
Sports Star Parties
Three Horseshoes Pub
Boston Tea Party
Hoorays Ice Cream Parlour
Playstation & Xbox Game Downloads

Plus – Festive Hampers, Wine, Chocolates and much more...

Please remember if you're unable to sell your tickets, hand them back into school.

Draw takes place on the 20th Dec at 3.30pm.

We're still accepting items to go into Festive Hampers – we would be delighted to receive them via the school office – **deadline 14th December.**

Your BSA Team is:

Vickie Owen – Chair, Hayley Stephens – Vice Chair

Emma Welch – Secretary, Adel Kelly – Treasurer

Jason Norledge – Communications

Facebook: 'Bidford School BSA'



New Year Holiday Club

Booking Now Open!



ACTIVE KIDS COURSE Tuesday 2nd to Thursday 4th JANUARY 2024
8:30am until 3:30pm

3 DAYS for only **£54**

PROUD TO BE A PART OF THE **HAF**
HOLIDAY ACTIVITIES & FOOD PROGRAMME

St Benedicts High School

Kinwarton Road, Alcester, B49 6PX



News Release

THURSDAY 30 NOVEMBER 2023

West Midlands measles cases prompt MMR vaccination call

People in the West Midlands are being urged to check that they, and all family members are up to date with their MMR vaccine, following confirmation that measles is circulating in the region.

Since 1 October 2023, there have been 19 confirmed cases in the West Midlands, with an increasing number of likely cases.

The UK Health Security Agency (UKHSA) West Midlands is working with local authorities and local NHS partners to make sure that anyone in the region who needs an MMR vaccination is aware that there is an increased risk of catching measles, following confirmed cases in Birmingham, Solihull and Coventry.

Paul Fisher, UKHSA West Midlands Consultant in Health Protection, said: “We are currently seeing cases of measles across the country, including the West Midlands region. Measles is very infectious and can spread rapidly among communities, such as schools, if people have not had at least one dose of the MMR vaccine.

“Uptake of the MMR vaccine in the West Midlands is much lower than the 95% needed to protect the population, which is giving this serious disease a chance to get a foothold in our communities, so it’s really important that anyone who hasn’t already had two doses of the MMR vaccine by the time they started full time school, contacts their GP surgery for an appointment to get vaccinated as soon as possible.

“While most people will recover completely within a couple of weeks, the virus can cause very serious illness – sometimes this can leave permanent disability and it can even be fatal. People in certain at-risk groups, including babies and small children, pregnant women, and people with weakened immunity, are at increased risk of complications if they catch measles.”

The individuals currently affected are all recovering, but hospital treatment was necessary for a few. Most of the measles cases we're seeing have had no doses of the MMR vaccine. One dose of MMR is at least 95% effective in preventing measles and the second dose gives maximum protection.

Symptoms of measles appear 7-10 days after contact with the virus and include:

- cold-like symptoms such as runny or blocked nose, sneezing and cough
- red, sore, watery eyes
- high temperature (fever), which may reach around 40°C / 104°F
- a non-itchy, red-brown rash usually appears 3-5 days later (sometimes starts around the ears before spreading to rest of the body), spots may be raised and join to form blotchy patches – which may be harder to see on darker skin tones
- small white spots may appear inside cheeks and the back of lips (for a few days)

Paul Fisher said: “If you think you could have measles, it’s really important to stay away from areas where you could come into contact with lots of other people – especially vulnerable patients in hospitals, care homes or other healthcare settings.

“If you have the symptoms of measles, it is **essential that you don’t just turn up at your GP practice, walk in centre or other healthcare setting.** Instead, you should contact your GP or NHS111 for advice. If you do need to visit your GP practice, walk-in centre or other healthcare setting, **please phone ahead so arrangements can be made to prevent other people being infected.**”

The MMR vaccine is part of the routine NHS schedule of childhood vaccines administered:

- **1st dose** just after the child’s first birthday
- **2nd dose** at 3 years 4 months and certainly before children start school full time

Paul Fisher added: “The MMR vaccine is free and a safe and effective way of protecting against measles, as well as mumps and rubella. If children and young adults have missed these vaccinations in the past, it’s important to take up the vaccine now from GPs, particularly in light of the recent cases. Check your child’s Red Book to see if they’ve received MMR vaccinations as scheduled or check with your GP surgery if you’re unsure. It’s never too late to get vaccinated against measles.”

For more information contact UKHSA West Midlands press office on 0121 232 9223/4 Out Of Hours 07834 311 393

Notes to Editors

1. The UK Health Security Agency (UKHSA) is responsible for protecting every member of every community from the impact of infectious diseases, chemical, biological, radiological and nuclear incidents and other health threats. We provide intellectual, scientific and operational leadership at national and local level, as well as on the global stage, to make the nation's health secure. UKHSA is an executive agency, sponsored by the [Department of Health and Social Care](#).

Website: www.gov.uk/ukhsa Facebook: www.facebook.com/UKHealthSecurityAgency
Follow us on Twitter/X: @UKHSA @UKHSA_WestMids

2. About the MMR vaccine

MMR is a highly effective and safe vaccine. Children should receive 2 doses of MMR for maximum protection. The vaccine not only protects them, but also limits the chances of the virus spreading more widely, for example to children who are too young to have the vaccine and to adults who may be more vulnerable to the disease.

The MMR vaccine is part of the routine NHS schedule of childhood vaccines administered:

- **1st dose** just after the child's first birthday
- **2nd dose** at 3 years 4 months and certainly before children start school full time

The MMR vaccine is safe and provides effective protection against three diseases – measles, mumps, and rubella. Two doses of MMR are required to produce the maximum protection. Anyone who is not up to date with their MMR vaccines should contact their GP to arrange an appointment.

For people who do not touch any pork products, there is a version of the MMR vaccine which does not use porcine gelatin in its production.

Further information on measles and the MMR vaccine can be found on the NHS website: www.nhs.uk

3. More information about measles is available on the NHS website here: <https://www.nhs.uk/conditions/measles/>
4. Further information about the MMR vaccine can be found on the NHS website here: <https://www.nhs.uk/conditions/vaccinations/mmr-vaccine/>

5. About measles

What is measles?

Measles is a viral infection most commonly found in young children who have not been immunised. However, adults can also catch measles if they have not had it before or have not been immunised against it.

It begins with fever that lasts for a couple of days followed by a cough, runny nose and conjunctivitis (red, sore eyes). The rash starts on the face and upper neck, spreads down the upper body and then extends to the arms, hands, legs and feet. After about 5 days the rash starts to fade.

How serious is measles?

Measles is an unpleasant illness and easily passed from one person to another. In some people it can cause complications, such as ear infection, chest infections and even pneumonia. In very rare cases some people who get measles can develop serious complications, which can be fatal.

How do you catch measles?

The measles virus lives in the nose and throat of infected people. Measles is caught through direct contact with an infected person or through the air when he or she coughs or sneezes. **A person with measles can infect other people from the day before they become unwell until 4 days after the rash appears.**

How is measles treated?

There is no specific treatment for measles, but measles can be prevented by a highly effective vaccine. This is part of the measles-mumps-rubella (MMR) immunisation programme, with a first dose at 12-15 months and a second dose at 3-5 years.

A scientific paper authored by Andrew Wakefield and 12 others, which appeared in the medical journal The Lancet in 1998 and implied a link between the MMR vaccine and autism, was disproved and retracted by the journal in 2010.

What to do to avoid passing on the infection:

Limit your contacts with other people, particularly those who are:

- pregnant
- children who are under 12 months or have not had the MMR vaccine
- people who have weak immune systems
- if you have measles, do not go to school or work for 5 days from when the rash first appeared and inform your school or employer immediately

Who is at risk from complications?

Anyone can be susceptible to complications from measles; however complications resulting from measles are more likely to develop in some children, for example:

- children with a weakened immune system, such as those with leukaemia or HIV/AIDS
- children with a poor diet
- children under the age of 5 years

Complications are also more likely to develop in adults who are over the age of 20

Complications of measles include:

- pneumonia
- ear and eye infections
- croup (an infection of the lungs and throat)

What if you're pregnant or planning to get pregnant?

If you are planning to get pregnant and you have not had measles yet, you should arrange with your GP to have the MMR vaccine. If you catch measles during pregnancy, it can be passed on to your baby and can be very damaging, or even fatal. Measles in pregnancy can cause miscarriage, premature labour or a baby with low birth weight. The MMR jab cannot be given during pregnancy.